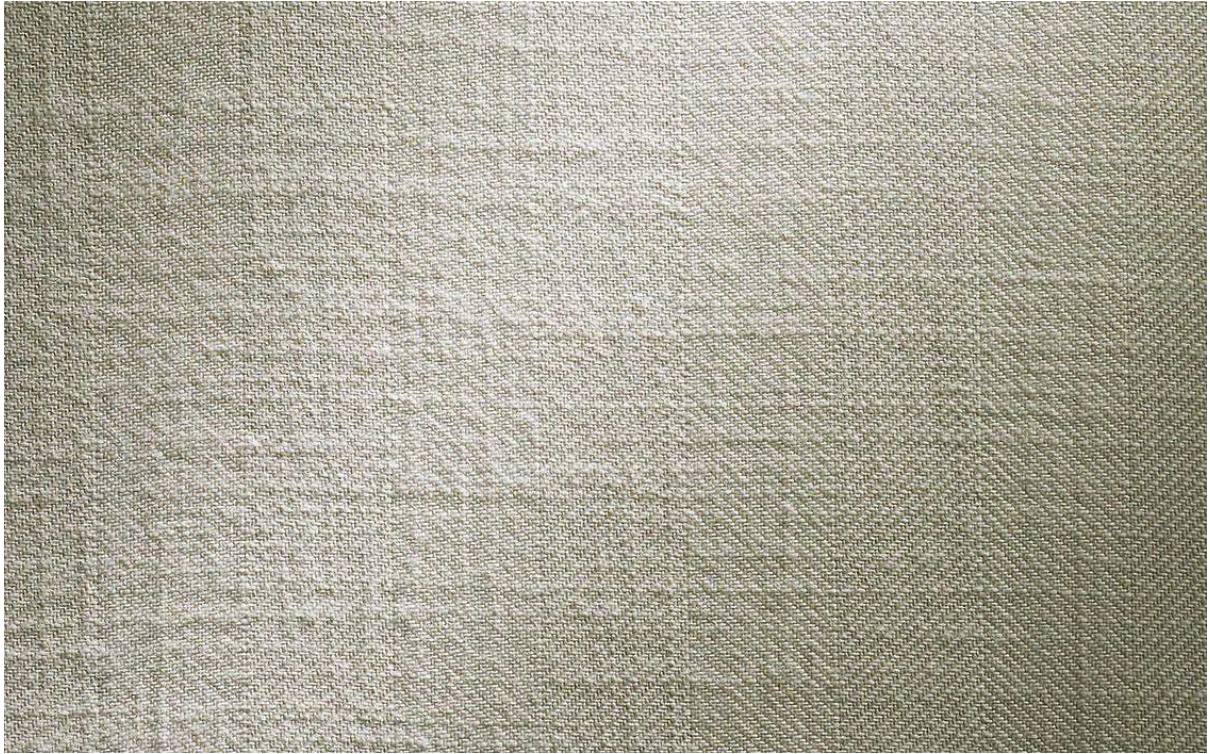


CANOE: DAYLIGHT

MH-6705-1610



A classic herringbone pattern reminiscent of the elegant wakes that trail human-powered watercraft. Available in perfectly balanced, subtle and bold color combinations, our Canoe performance fabric features a robust pattern width that incorporates a linen look woven with slight, intentional irregularities for added textural appeal.

Item Width: 54"

Weight: 26 ounces per yard

Horizontal Repeat: 2.9"

Country of Origin: Italy

Content: 100% Acrylic

UFAC/NFPA 260: Class I

Martindale Abrasion Rating: 50,000