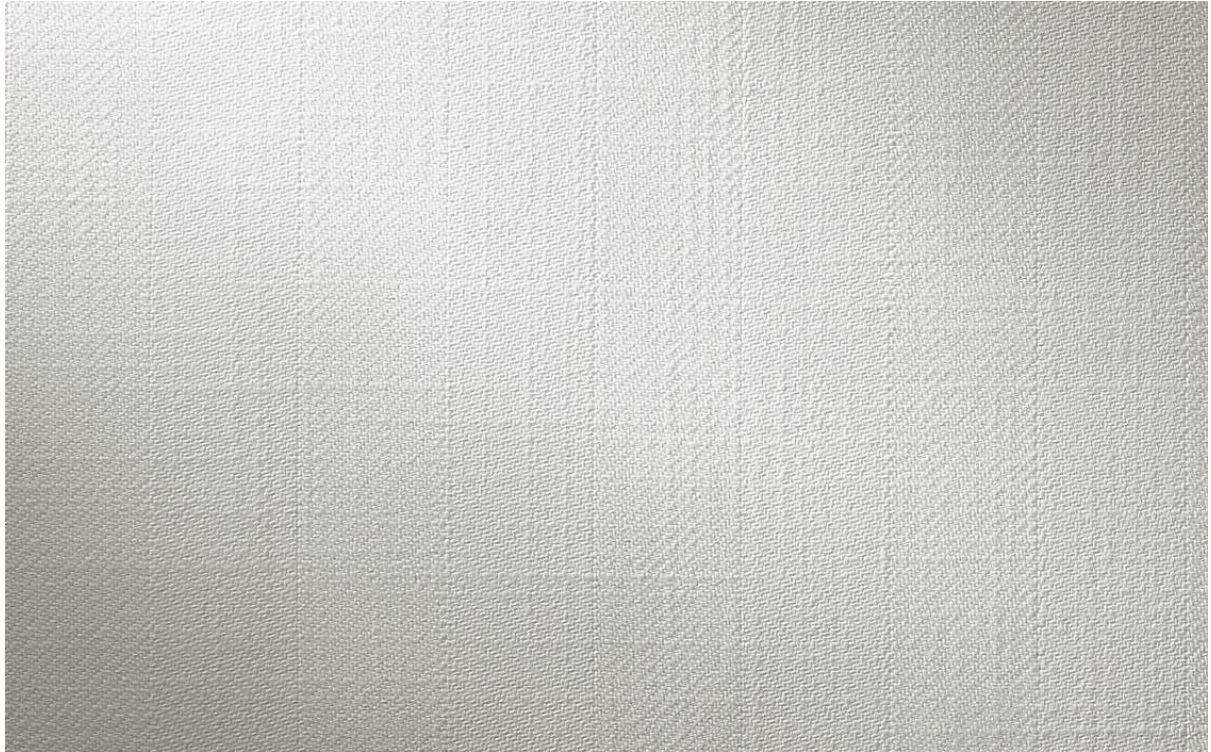


## CANOE: SWAN

MH-6705-1010



A classic herringbone pattern reminiscent of the elegant wakes that trail human-powered watercraft. Available in perfectly balanced, subtle and bold color combinations, our Canoe performance fabric features a robust pattern width that incorporates a linen look woven with slight, intentional irregularities for added textural appeal.

**Item Width:** 54"

**Weight:** 26 ounces per yard

**Horizontal Repeat:** 2.9"

**Country of Origin:** Italy

**Content:** 100% Acrylic

**UFAC/NFPA 260:** Class I

**Martindale Abrasion Rating:** 50,000